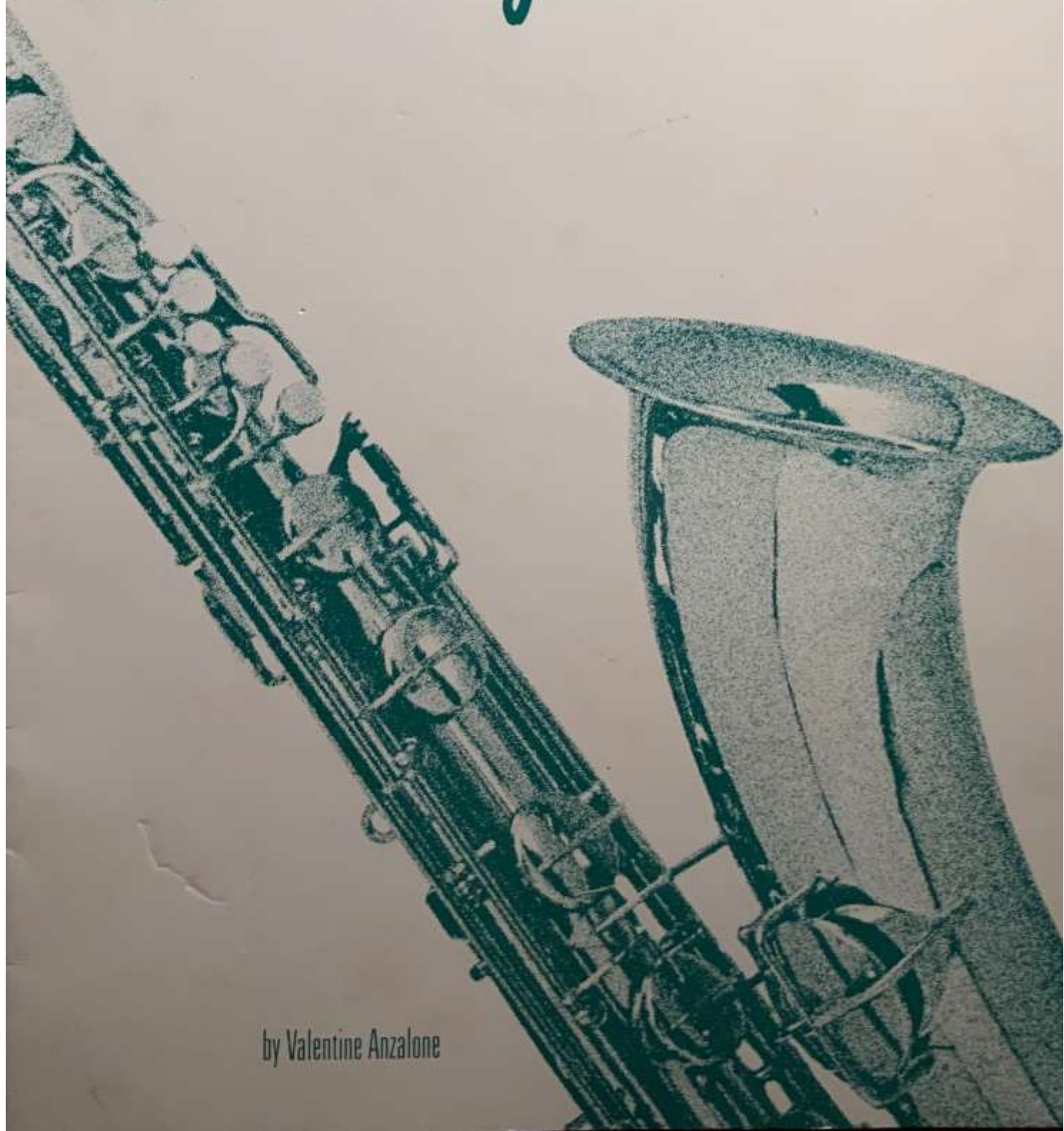


breeze-easy method **1**

# Saxophone

by Valentine Anzalone




(All New Notes and Material will be placed in a box at the beginning of each lesson.)

LESSON 1.

○ = WHOLE NOTE  $\frac{4}{4}$  TIME

— = WHOLE REST ' = BREATH MARK



1. **New** **COUNT SLOWLY AND EVENLY**  
 1 2 3 4 1 2 3 4 1 2 3 4 1 2 3 4 1 2 3 4 1 2 3 4 1 2 3 4 1 2 3 4

2. **New** A

3.

4. **New** G

5.

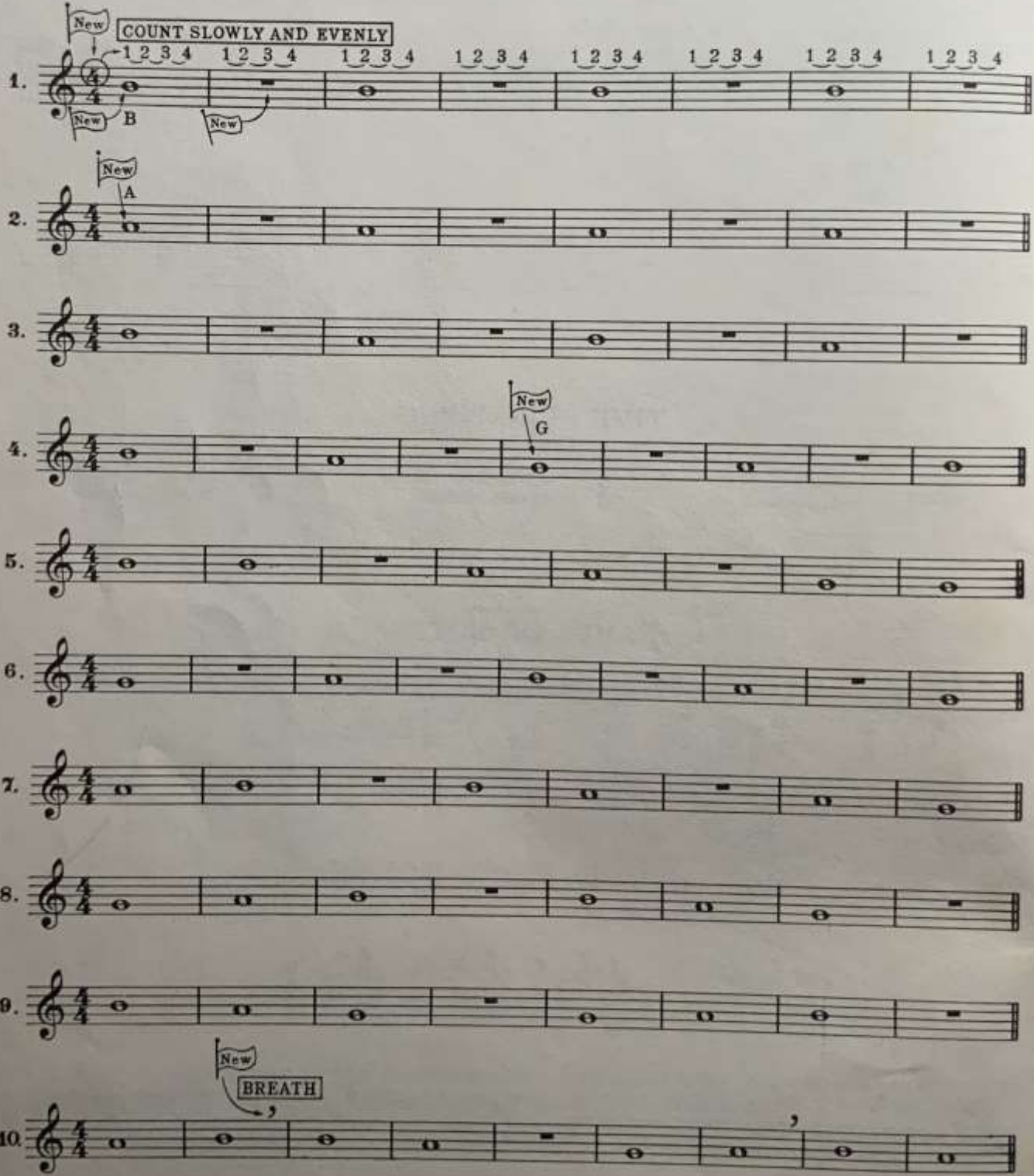
6.

7.

8.

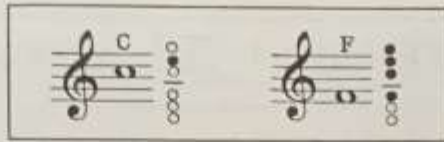
9.

10. **New** BREATH



THIS LESSON HAS BEEN COMPLETED. DATE \_\_\_\_\_ EXCELLENT  GOOD  FAIR

# LESSON 2.



1. Musical staff 1: Treble clef, 4/4 time signature. Notes: C4, G4, F4, C4, G4, F4, C4, G4, F4. A callout box labeled "New C" points to the first C4 note.

2. Musical staff 2: Treble clef, 4/4 time signature. Notes: C4, G4, F4, C4, G4, F4, C4, G4, F4.

3. Musical staff 3: Treble clef, 4/4 time signature. Notes: C4, G4, F4, C4, G4, F4, C4, G4, F4. A callout box labeled "New F" points to the first F4 note.

4. Musical staff 4: Treble clef, 4/4 time signature. Notes: C4, G4, F4, C4, G4, F4, C4, G4, F4.

5. Musical staff 5: Treble clef, 4/4 time signature. Notes: C4, G4, F4, C4, G4, F4, C4, G4, F4. Accents are placed above the G4 and F4 notes in the 2nd, 4th, 6th, and 8th measures.

6. Musical staff 6: Treble clef, 4/4 time signature. Notes: C4, G4, F4, C4, G4, F4, C4, G4, F4. Accents are placed above the G4 and F4 notes in the 2nd, 4th, 6th, and 8th measures.

7. Musical staff 7: Treble clef, 4/4 time signature. Notes: C4, G4, F4, C4, G4, F4, C4, G4, F4.

8. Musical staff 8: Treble clef, 4/4 time signature. Notes: C4, G4, F4, C4, G4, F4, C4, G4, F4.


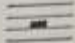
9. Musical staff 9: Treble clef, 4/4 time signature. Notes: C4, G4, F4, C4, G4, F4, C4, G4, F4.

## FIRST DUET


10. Musical staff 10: Two staves in 4/4 time signature. Top staff notes: C4, G4, F4, C4, G4, F4, C4, G4, F4. Bottom staff notes: C4, G4, F4, C4, G4, F4, C4, G4, F4. Accents are placed above the G4 and F4 notes in both staves in the 2nd, 4th, 6th, and 8th measures.

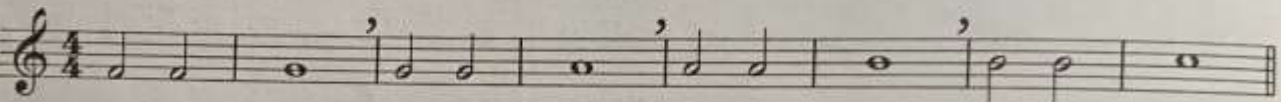
THIS LESSON HAS BEEN COMPLETED. DATE \_\_\_\_\_ EXCELLENT  GOOD  FAIR

LESSON 3.

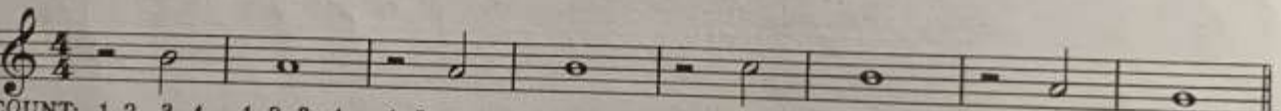
 = HALF NOTE	 = HALF REST
---	---

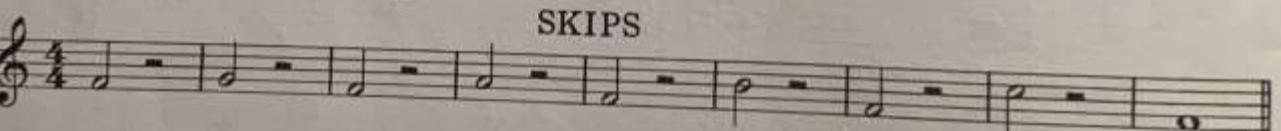
1.   
 COUNT: 1 2 3 4 1 2 3 4

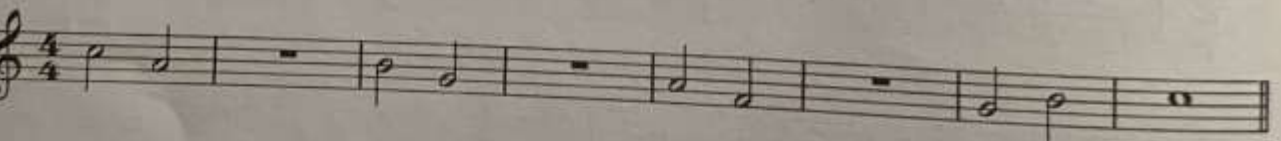
2.   
 COUNT: 1 2 3 4


3. 

4. 

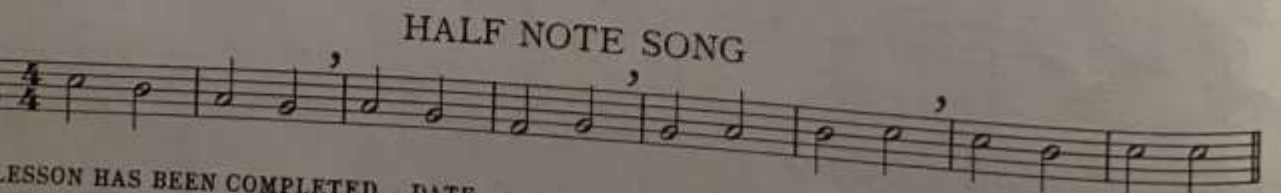
5.   
 COUNT: 1 2 3 4 1 2 3 4 1 2

6.  SKIPS

7. 

8. 

9. 

10.  HALF NOTE SONG

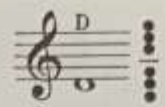
THIS LESSON HAS BEEN COMPLETED. DATE \_\_\_\_\_ EXCELLENT  GOOD  FAIR





LESSON 6.

C=COMMON TIME-Same as  $\frac{4}{4}$



1. 2. 3. 4. 5.

OLD GERMAN SONG

6. 7.

MARY HAD A LITTLE LAMB

8.

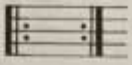
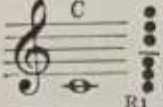
REVIEW QUIZ NO. 1

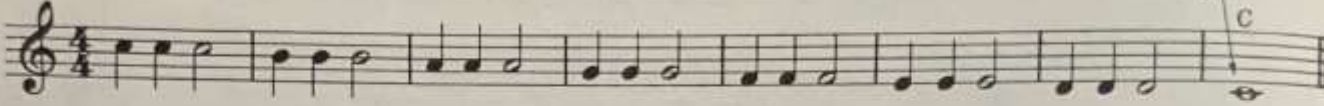
WRITE IN THE NAME OF EACH NOTE GIVEN BELOW

EXAMPLE

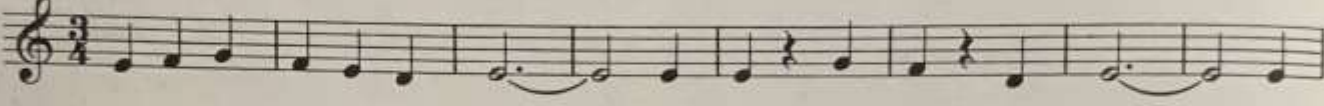
THIS LESSON HAS BEEN COMPLETED. DATE \_\_\_\_\_ EXCELLENT  GOOD  FAIR

LESSON 7.

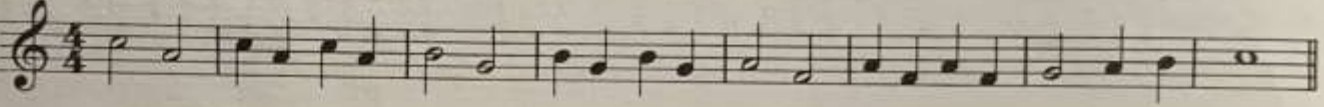
 = REPEAT SIGNS
 

1. 

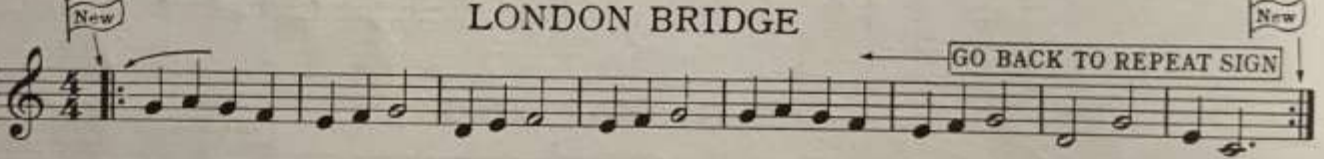
HICKORY DICKORY DOCK

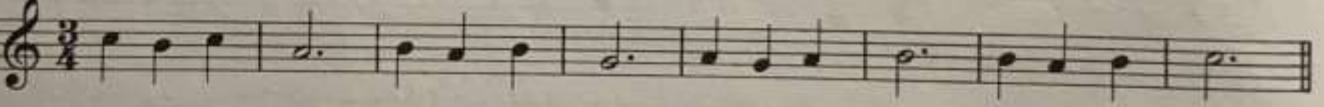
2. 

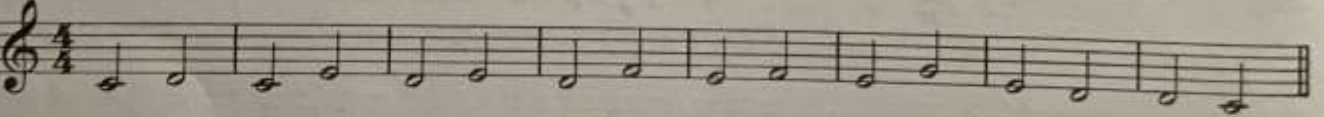


3. 

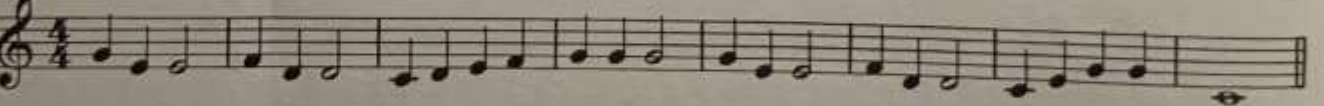
LONDON BRIDGE

4. 

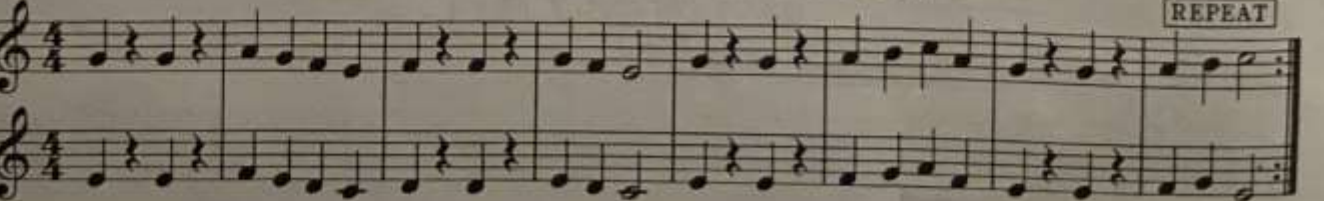
5. 

6. 

CHERRIES RIPE

7. 

MARCH OF THE KING'S MEN (Duet)

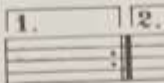
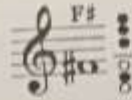
8. 

THIS LESSON HAS BEEN COMPLETED. DATE \_\_\_\_\_ EXCELLENT  GOOD  FAIR



## LESSON 8.

KEY OF G  
ALL F's ARE SHARP



= FIRST AND SECOND ENDINGS

## WARM UP

1. 2. 3. 4.

## OLD ENGLISH MELODY

5.

## YANKEE DOODLE

6. 7.

## FIRST AND SECOND ENDINGS

8.

## A TISKET, A TASKET

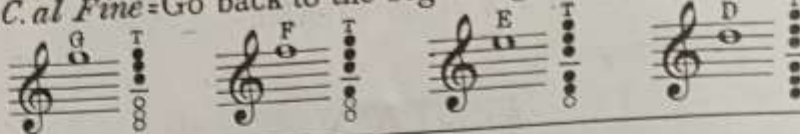
9.

Upon completion of this lesson the student will find much enjoyment in playing from BREEZE-EASY RECITAL PIECES-Book I by JOHN KINYON. This collection of well-known songs has been arranged in the simplest possible fashion and is available with piano accompaniment.

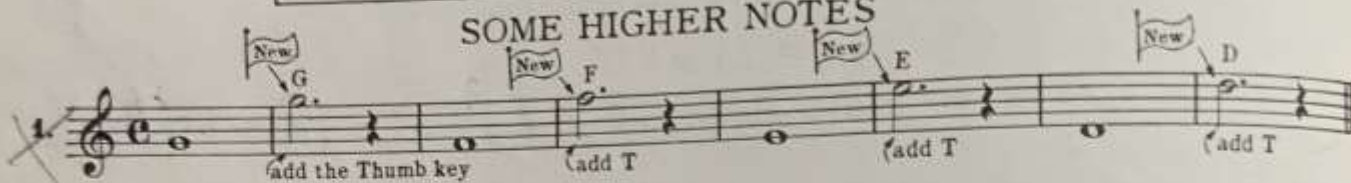
THIS LESSON HAS BEEN COMPLETED. DATE \_\_\_\_\_ EXCELLENT  GOOD  FAIR

LESSON 9.

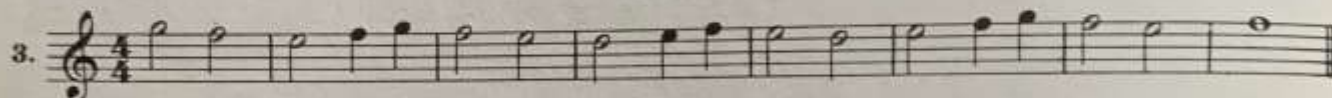
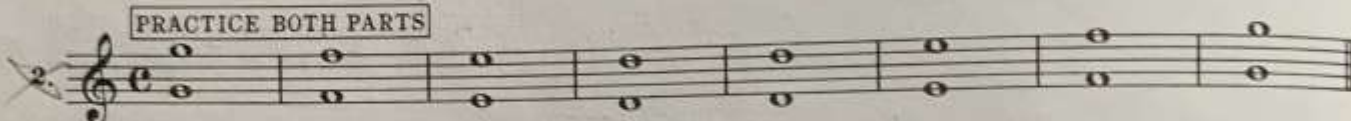
*D.C. al Fine* = Go back to the beginning and play to *Fine* (End).



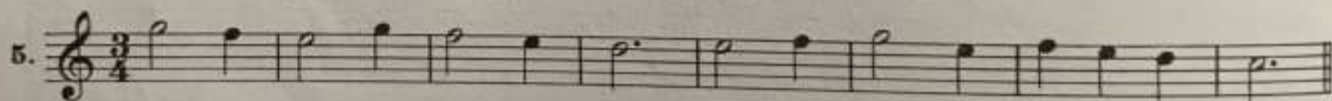
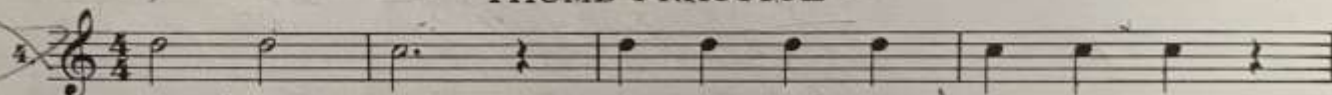
SOME HIGHER NOTES



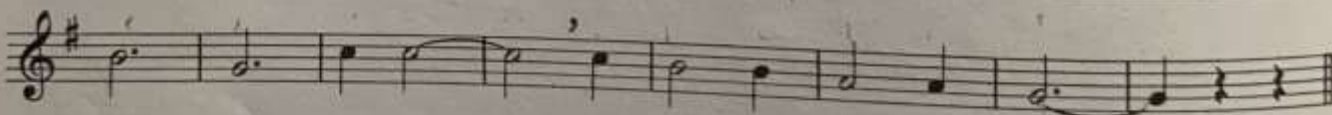
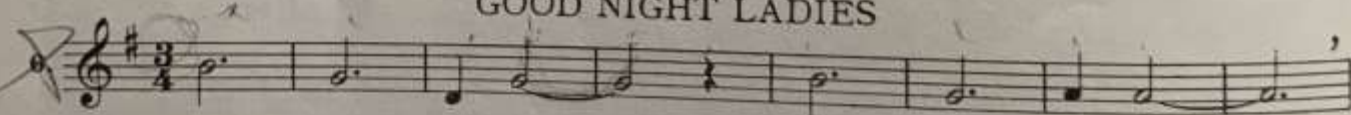
PRACTICE BOTH PARTS



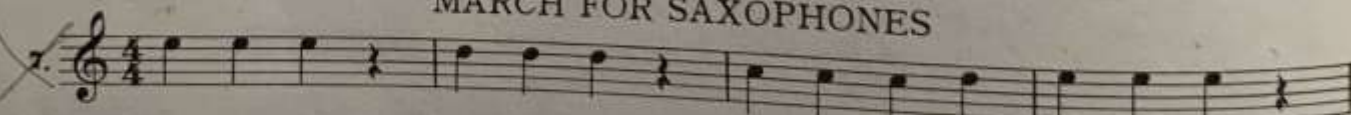
THUMB PRACTICE



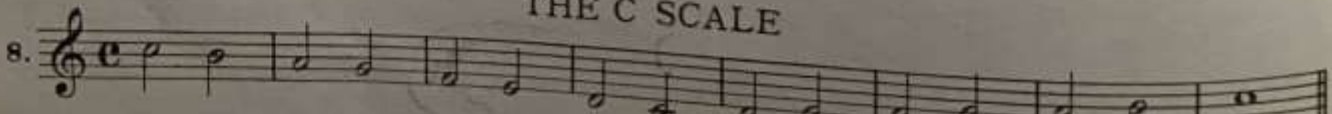
GOOD NIGHT LADIES



MARCH FOR SAXOPHONES



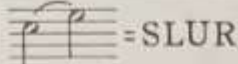
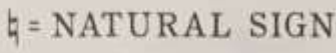
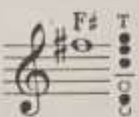
THE C SCALE

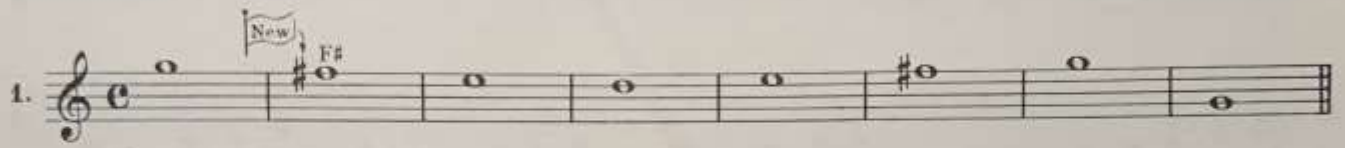


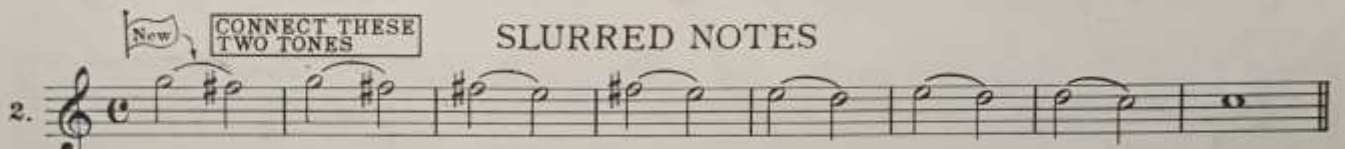
THIS LESSON HAS BEEN COMPLETED. DATE \_\_\_\_\_

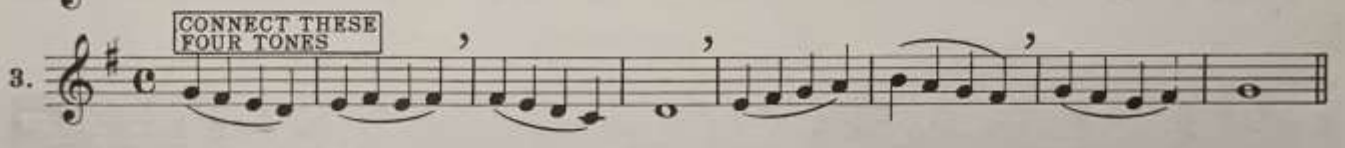
EXCELLENT  GOOD  FAIR

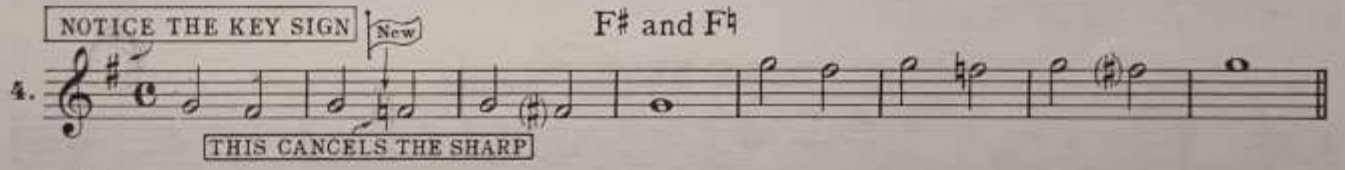
LESSON 10.

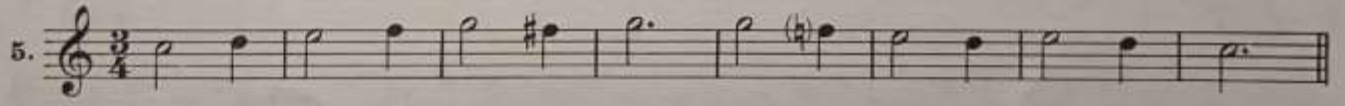
 = SLUR  
 = NATURAL SIGN  
 PICK-UP NOTE

1. 

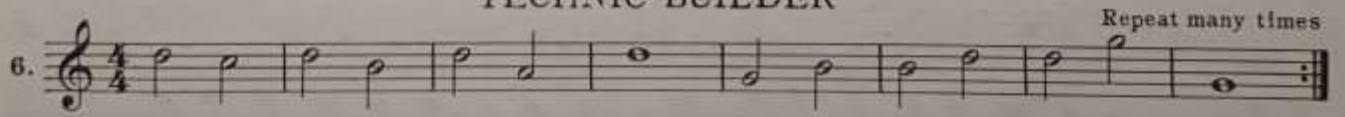
2.  **CONNECT THESE TWO TONES** SLURRED NOTES

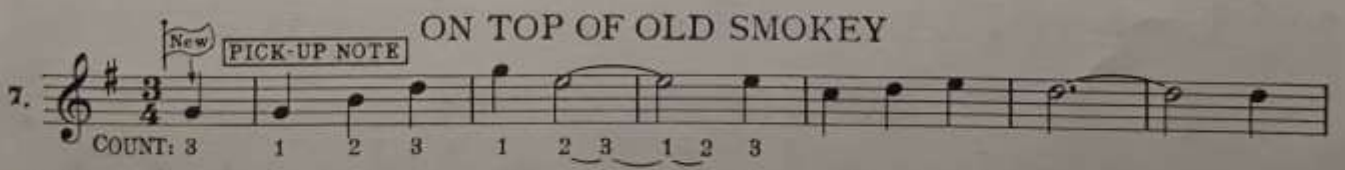
3.  **CONNECT THESE FOUR TONES**

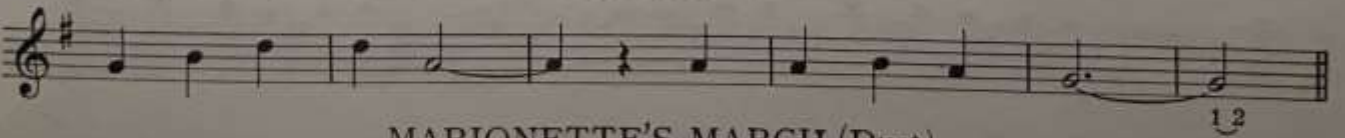
4.  **NOTICE THE KEY SIGN** **F# and Fb**  
**THIS CANCELS THE SHARP**

5. 

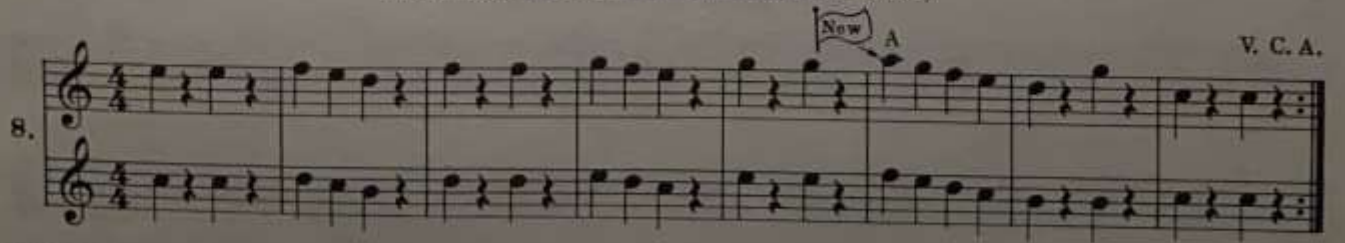
TECHNIC BUILDER

6.  Repeat many times

7.  **ON TOP OF OLD SMOKEY**  
**PICK-UP NOTE**  
 COUNT: 3 1 2 3 1 2 3 1 2 3

 1 2

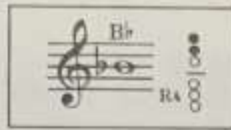
MARIONETTE'S MARCH (Duet)

8.  **V. C. A.**

THIS LESSON HAS BEEN COMPLETED. DATE \_\_\_\_\_ EXCELLENT  GOOD  FAIR



LESSON 12.



1.

2.

3.

A SINGING GAME

4.

THE C SCALE (Memorize)

5.

CRUSADER'S HYMN

6.

Bb and Bb

7.

ABIDE WITH ME

8.

THIS LESSON HAS BEEN COMPLETED. DATE \_\_\_\_\_ EXCELLENT  GOOD  FAIR

LESSON 13.

KEY OF F  
ALL B's ARE FLAT

1. *New*  $B^b$   $b$   $a.$

2. *New* THIS MEANS ALL B's ARE FLAT

3. HOW CAN I LEAVE THEE  $(b)$

THE F SCALE (Memorize)

4.

5.

CIRCUS WALTZ (Duet)

6. *Learn both parts* *1.* *2.* *V. C. A.* *Fine*

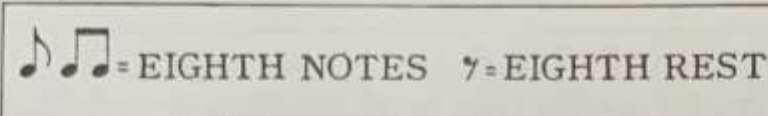
*D.C. al Fine*

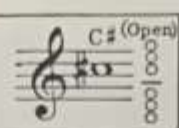
REVIEW QUIZ NO. 2

The top number in a time sign tells you how many beats are in a measure, for example, in  $\frac{3}{4}$  time there are 3 beats in a measure. Fill in the empty measures given below with note values that will be correct for the time sign given.

THIS LESSON HAS BEEN COMPLETED. DATE \_\_\_\_\_ EXCELLENT  GOOD  FAIR

LESSON 14.


 = EIGHTH NOTES   7 = EIGHTH REST


 C# (Open)

FOOT TAPPING DIRECTION   **New**   EIGHTH NOTES

1. 
  
 COUNT: 1 + 2 + 1 + 2 + 1 + 2 +

2. 
  
 COUNT: 1 + 2 + 1 + 2 +

3. 
  
 COUNT: 1 + 2 + 3 + 4 +

JINGLE BELLS

4.

THE EIGHTH REST

5. 
  
 COUNT: 1 + 2 + 1 + 2 +

THE C SCALE

6.

TWINKLE TWINKLE LITTLE STAR

7. 
  
 COUNT: 1 + 2 +

THE BLUE BELLS OF SCOTLAND

8.

THIS LESSON HAS BEEN COMPLETED. DATE \_\_\_\_\_ EXCELLENT  GOOD  FAIR

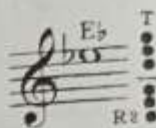
LESSON 15.

> = ACCENT MARK

*D. S. al Fine* - Go back to the sign (§) and play to *Fine* (End).



KEY OF D  
ALL F's AND C's ARE SHARP



ACCENT EXERCISE

1. **EMPHASIZE THIS NOTE**

2. **COUNT: 1 + 2 +**

AFTER-BEATS

3. **COUNT: 1 + 2 +**

4. **EMPHASIZE THIS NOTE**

THE D SCALE

5. **EMPHASIZE THIS NOTE**

GOING HOME (Duet)

DVORAK

6. **EMPHASIZE THIS NOTE**

POODLES ON PARADE

7. **EMPHASIZE THIS NOTE**

(Do not play the 1st ending when going *D. S. al Fine*)

8. **EMPHASIZE THIS NOTE**

9. **EMPHASIZE THIS NOTE**

THIS LESSON HAS BEEN COMPLETED. DATE \_\_\_\_\_ EXCELLENT  GOOD  FAIR